

PERIPHERIE 8, Holeestrasse 8, 4054 Basel
@peripherie8_offspace_basel
www.peripherie8.com

WOR(L)DS OF BORDERS

Yota Tsotra

10. – 24.05.2025

Wor(l)ds of Borders by Yota Tsotra examines the role of Greek media and political agendas in shaping distorted narratives around migration, while simultaneously honoring the transformative power of storytelling in linking language to material reality. Tsotra creates a reflective space, addressing migration both as an immediate, tangible reality within the Mediterranean—a region to which she maintains strong personal ties—and as a universal condition intrinsic to all life.

At the entrance to the exhibition, visitors are greeted by a striking neon installation displaying the words *push, back, forward*. These flickering words, bathed in cold, bright light, embody a profound duality. On one hand, they evoke the violent practice of pushbacks, reducing human lives to mere numbers in an ongoing political game. On the other, they symbolize the unyielding human drive to seek dignity and safety. The glowing words serve as both a warning and a beacon of hope.

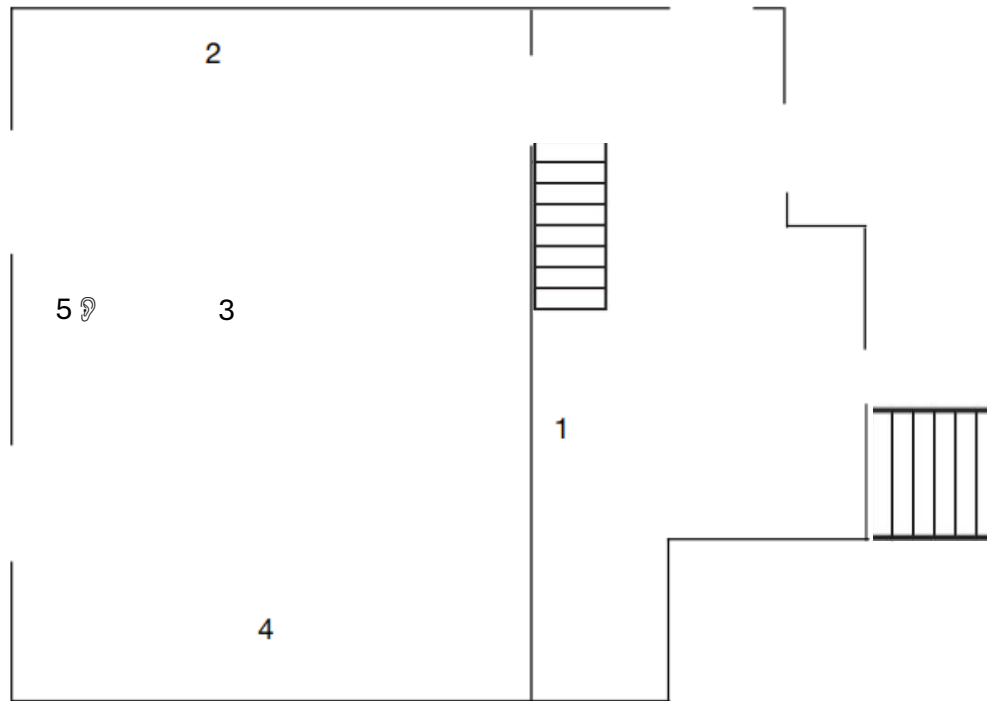
As visitors progress deeper into the exhibition they encounter a fence—a concrete echo of the barriers that divide our world. This physical partition forces an embodied engagement, compelling viewers to confront the vulnerability and fear imposed by the systems of power that structure society.

On one side of the fence, an evocative image of a jackall emerges—a creature celebrated for its cunning, resilience and adaptability. The jackall serves as a living metaphor for migration. In its presence, migration becomes a shared impulse among both humans and non-humans, transcending the arbitrary constraints of the nation-state.

On the opposite side, Tsotra presents a painting from her *Landscape of a New World* series. This work acts as a speculative call to reimagine the future, where the movement of people redefines territories and power structures. Yet, beneath this vision lies a poignant question: can the idealized world carried by migrants ever truly meet the one that awaits them?

In *Wor(l)ds of Borders*, every element functions as both a critique and a poetic reminder. The narratives we construct are the very boundaries we live by. As environmental crises and geopolitical shifts continue to accelerate, Tsotra invites us to reimagine borders not as impenetrable walls, but as porous thresholds where stories and lives continuously evolve.

Text by Eleni Riga, Curator



1. Pushback/Forward, 2025, programmed light text sign, 140 cm x 15 cm.
2. Jackall, 2022, fine art print, mounted on aluminium, 60 cm x 44.5 cm, ed. 5 + 2 ap.
3. Fence, 2025, wood, metal, concrete, acrylic and PU lack, 424 cm x 226 cm x 15 cm.
4. Landscape of a New World IX, 2025, oil on canvas, 80 cm x 60 cm.
5. Jackalls, 2025, found sound footage, 52”.